



CHURCH REOPENING

PLANS & GUIDELINES



PLEASE READ THROUGH THE FOLLOWING GUIDELINES THAT WILL BE IN PLACE IN ORDER FOR US TO REOPEN:

1. EVERYONE MUST RSVP: If you would like to attend a service, we ask that you please email us at rsvp@covenant-church.ca and let us know that you are planning on coming. Also let us know how many people will be coming with you. This will help us know if we are within the 30% capacity total. We will have 50 seating areas available each week. What's a seating area? It is a section in the sanctuary that can seat 1-6 family members **FROM THE SAME HOUSEHOLD** together in a 6 foot section.

SELF ASSESSMENT: Before arriving on Sunday morning each member of your household who is planning on attending must review the following questions. If anyone answers YES to any questions, we do ask that you stay home and enjoy the service online on our YouTube channel at <https://www.youtube.com/channel/UCeDLbdSc5xvIRTDnuwFq3iA>

- Have you had a cough, sore throat, shortness of breath, and/or fever above 38° C / 100.4° F in the last 72 hours (3 days)? (Please note fever resolution must be without the aid of fever-reducing medication)
- Have you had contact with anyone with these symptoms in the past 14 days? (Cough, sore throat, shortness of breath, and/or fever above 38° C / 100.4° F)
- Are you living with anyone who is sick or quarantined?
- Have you traveled anywhere that has a significant number of new COVID-19 cases, or is considered a COVID-19 “hot spot” in the last 14 days?
- Do you live with, or have frequent contact with, someone over the age of 75 or who has a serious underlying health condition?





ARRIVAL (Front doors open at 9:45am): Upon arrival we ask that everyone enter through the front doors of the church building. You will then line up with everyone from your household.

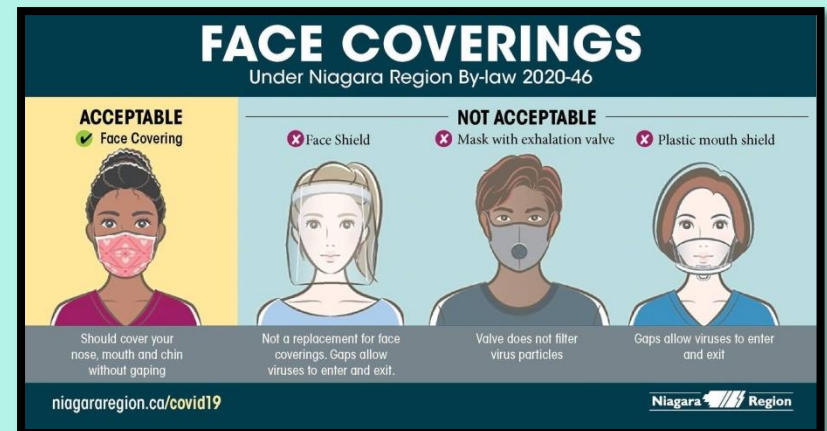
We ask that, while in line, you observe the 2m/6ft physical distancing. Once inside you will be marked present from the RSVP list that has been prepared for each Sunday.

SAFETY/WELCOME CENTRE: We do ask you to adhere to the following bylaws and guidelines for the safety of all our members, guests, volunteers and staff members. At the welcome centre we ask that you do the following:

- We ask that you sanitize your hands before entering the sanctuary. Some will be provided or you can bring your own to apply before entering if you have skin issues.

- **MASKS REQUIRED FOR ENTIRE SERVICE** - We ask that everyone entering the building wear a proper cloth face covering (covering chin, mouth and nose) for the full duration of the service. This is one simple way that we can help to keep everyone safe. If you are not wearing a proper mask, one will be provided for you.

(See attached photo from the Niagara Region)



SAFETY/WELCOME CENTRE (Continued):

- Avoid physical contact. This includes hugs, handshakes, high five etc. A friendly “HELLO, it’s great to see you” will go a long way.
- We ask that you follow the directions of our volunteers while in the building. They are there to keep everyone as safe as possible.
- Please physical distance when walking through the building.
- Stay together with your family household, ie. Kids/Youth must sit with parents.
- Bathrooms will be for emergency use only. If you do need to use the bathroom, we ask that you wipe down after use with the provided supplies.

NON-COMPLIANCE: If you will not comply with the above safety measures, you will be asked to leave the building/ service.

SANCTUARY SEATING: Ushers will be available to assist you, but we ask that each guest (or family) sit in an area that is marked by tape. (The tape will be visible in front of you).

Smaller families can be seated anywhere, but we ask that larger families (5 or more) sit in the back left (sound booth side) section of the church. (You will see the longer strips of tape).

Staying in these taped off areas will keep all our guests within the appropriate physical distancing requirements.



SERVICES: The service itself will be a combination of live and pre-recorded elements. The service will also be much shorter than we are used to so that families with young children can attend.

SINGING & EXITING THE BUILDING: Our time for singing (with masks on) will be at the end of the service. If you are not ready to sing in church, there will be a short pause after the blessing and before singing starts that you may leave the sanctuary. We completely understand that many are ready to sing in church, but that also, many are not. We want to provide a service that meets the needs of everyone and where everyone is comfortable. We ask that all guests exit through the back doors of the church at the end of the service (unless mobility is a problem).



SOCIALIZING IN THE PARKING LOT: We would love to socialize after the service but under current provincial rules congregating together outside could make Covenant Church liable for a \$10,000 fine as well as a \$700 fine/person.

READY TO RSVP? Please email today!!! (rsvp@covenant-church.ca)

- NOTES:**
- You will be required to RSVP each week. If our registrations are over our 30% capacity for any given week, you will be notified.
 - As COVID guidelines change, so will our approach to in person worship.



Thank you for taking the time to read the guidelines that we will have in place when we re-open on Sunday, October 18.

**We hope to see you at church!!!
Don't forget to RSVP 😊**

